

S.E. 1/4  
SECTION 19, T.7N., R.1E., S.L.B. & M.

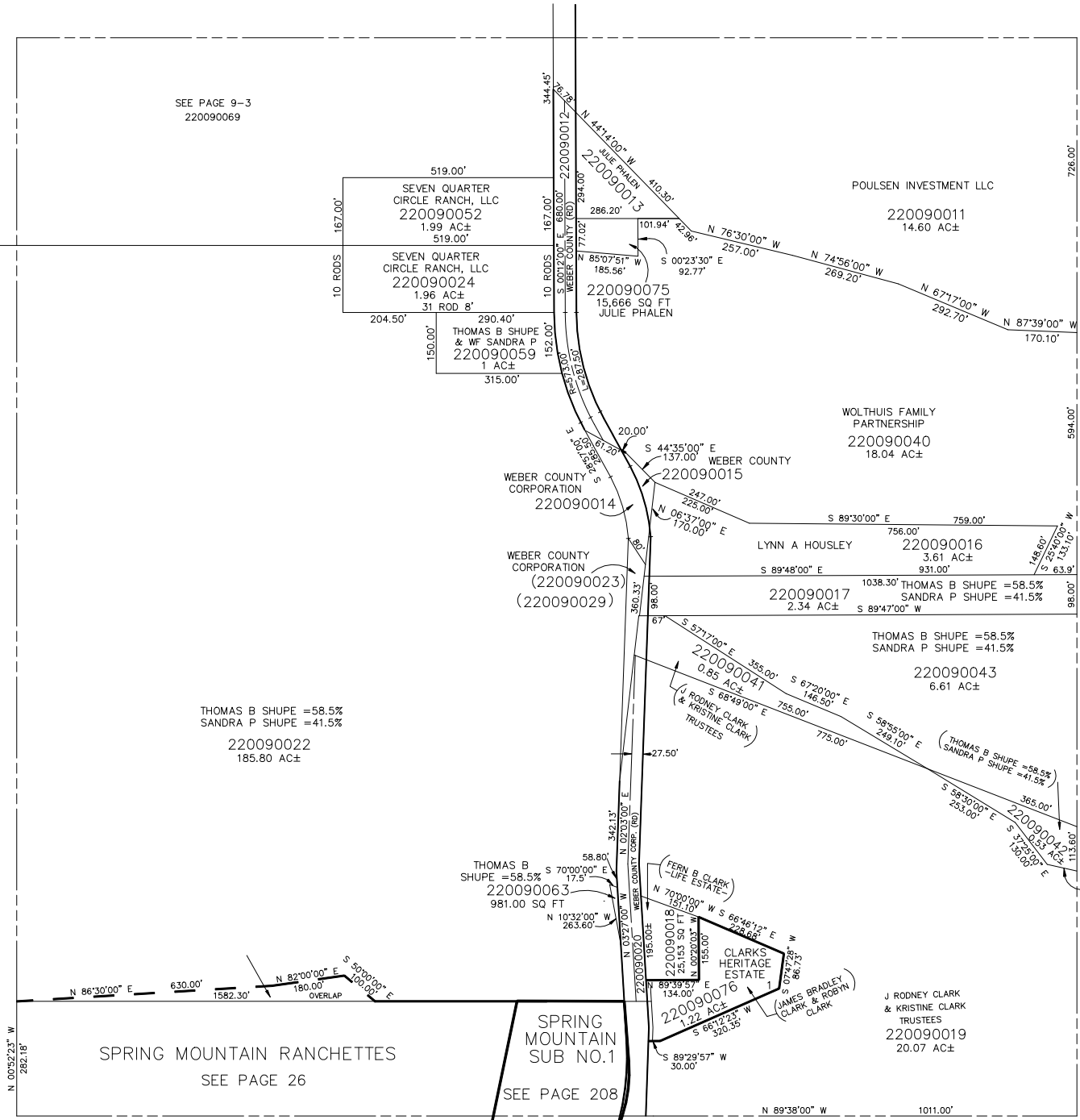
LIBERTY DISTRICT  
SCALE 1" = 200'

TAXING UNIT: 36

SEE PAGE 9

SEE PAGE 9-2

SEE PAGE 14



SEE PAGE 9-3  
220090069

519.00'  
SEVEN QUARTER  
CIRCLE RANCH, LLC  
220090052  
1.99 AC±  
519.00'

204.50'  
SEVEN QUARTER  
CIRCLE RANCH, LLC  
220090024  
1.96 AC±  
31 ROD 8'

290.40'  
THOMAS B SHUPE  
& WF SANDRA P  
220090059  
1 AC±  
315.00'

POULSEN INVESTMENT LLC  
220090011  
14.60 AC±

220090075  
15,666 SQ FT  
JULIE PHALEN

WOLTHUIS FAMILY  
PARTNERSHIP  
220090040  
18.04 AC±

WEBER COUNTY  
CORPORATION  
220090014

LYNN A HOUSLEY  
220090016  
3.61 AC±

WEBER COUNTY  
CORPORATION  
(220090023)  
(220090029)

220090017  
2.34 AC±

THOMAS B SHUPE = 58.5%  
SANDRA P SHUPE = 41.5%

THOMAS B SHUPE = 58.5%  
SANDRA P SHUPE = 41.5%  
220090022  
185.80 AC±

220090041  
0.85 AC±  
(J RODNEY CLARK  
& KRISTINE CLARK  
TRUSTEES)

THOMAS B SHUPE = 58.5%  
SANDRA P SHUPE = 41.5%  
220090043  
6.61 AC±

THOMAS B  
SHUPE = 58.5%  
220090063  
981.00 SQ FT

(FERN B CLARK  
-LIFE ESTATE)

220090018  
25,143 SQ FT  
CLARKS  
HERITAGE  
ESTATE

220090076  
2.22 AC±  
(JAMES BRADLEY  
CLARK & ROBYN  
CLARK)

J RODNEY CLARK  
& KRISTINE CLARK  
TRUSTEES  
220090019  
20.07 AC±

SPRING MOUNTAIN RANCHETTES  
SEE PAGE 26

SPRING  
MOUNTAIN  
SUB NO.1  
SEE PAGE 208